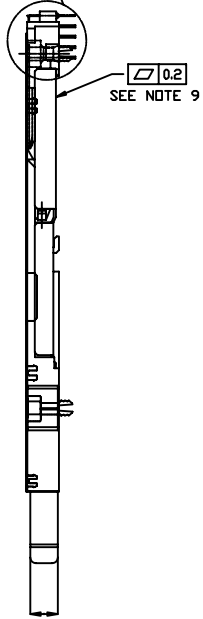
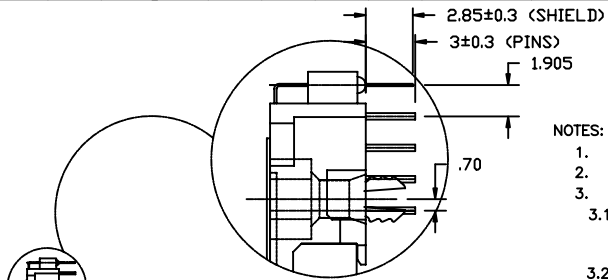
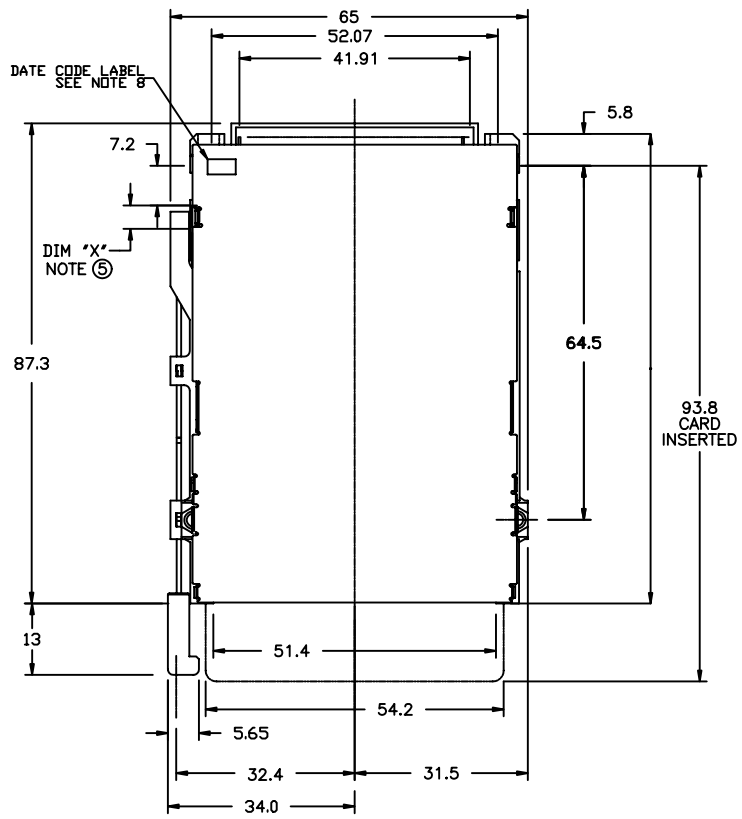


FCI CONFIDENTIAL



This document is the property of and embodies CONFIDENTIAL and PROPRIETARY information of FCI. No part of the information shown on this document may be used in any way or disclosed to others without the written consent of FCI. Copyright FCI.

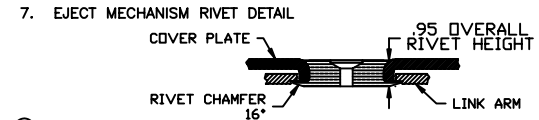
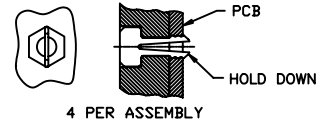
PRODUCT NO.
98545-100CAH
98545-100CAHLF



- NOTES:
- 8mm MIN CARD EJECT.
 - PUSH-ROD TRAVEL: 9.5mm
 - MATERIAL:
 - HEADER ASSY:
 - PLASTIC HOUSING: LCP UL94V-0 BLACK - ABOVE PCB
 - PIN: PHOSPHOR BRONZE
 - EJECT MECHANISM ASSY:
 - PLASTIC GUIDE: POLYPHTHARAMID UL94V-0 BLACK
 - PLASTIC PUSH-ROD BUTTON: POLYPHTHARAMID UL94V-0 BLACK
 - COVER PLATE, EJECT PLATE, LINK ARM, PUSH ROD: STAINLESS STEEL
 - EMI CONTACT: PHOSPHOR BRONZE
 - FINISH (PIN)
 - UNDER PLATING: 0.5um MIN Ni
 - CONTACT AREA: 0.1um MIN GOLD OVER
 - 0.5um MIN Pd-Ni
 - SOLDER TAIL: 2.5umMIN Sn-Pb
 - SOLDER TAIL(IF LF P/N): 2.5umMIN PURE Sn

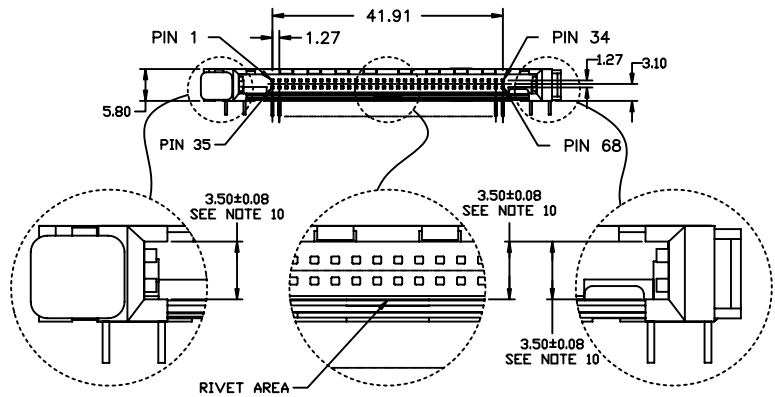
⑤ DIM "X"

4.25±0.1	3.5±0.1	5.0±0.1
OTHERS	36,67	1,17,34,35,51,68



⑥ DATE CODE = ABBC
 DAY OF WEEK
 WEEK
 YEAR
 EXAMPLE: 1043=3rd DAY OF 4th WEEK OF 2001

- ⑨ FLATNESS 0.2mm OVER THIS EJECT MECHANISM COVER PLATE SURFACE.
- ⑩ CHECK INTERNAL CLEARANCE FOR CARD AT THIS LOCATION.
- IF LEAD FREE P/N, THE HOUSING WILL WITHSTAND EXPOSURE TO 260° C PEAK TEMPERATURE FOR 10 SECONDS IN A WAVE SOLDER APPLICATION WITH A 1.00MM MINIMUM THICK CIRCUIT BOARD.
 - LEAD FREE PRODUCT MEETS EUROPEAN UNION DIRECTIVES AND OTHER COUNTRY REGULATIONS AS DISCRIBED IN GS-22-008



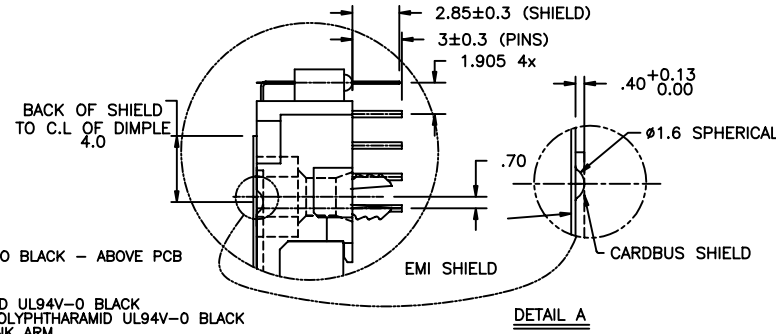
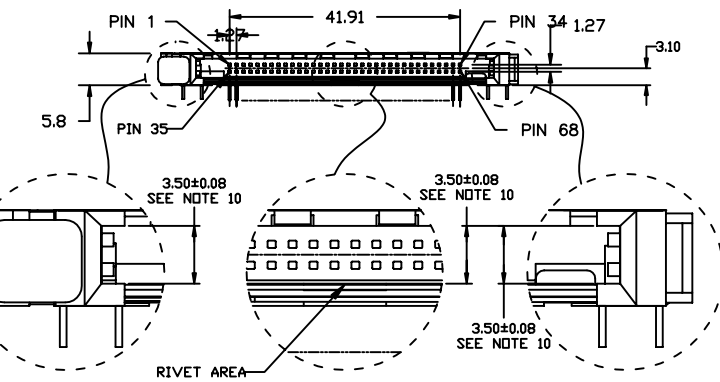
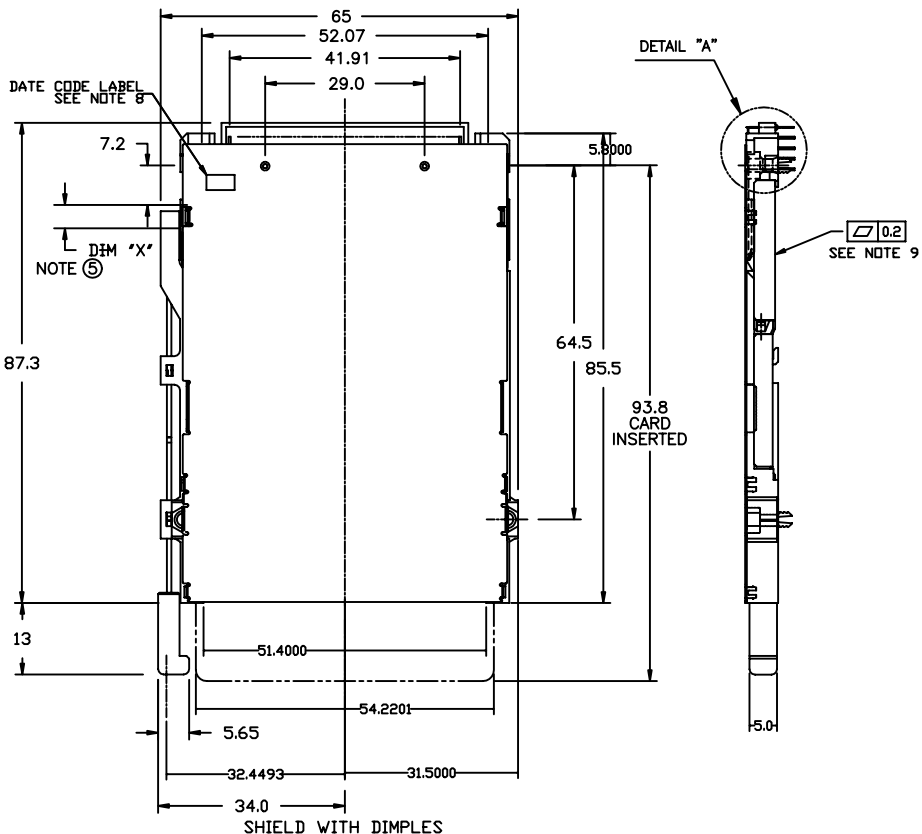
mat'l. code		surface		tolerance		projection		product family	
		ISO 1302		ISO 406 ISO 1101				CARDBUS	
ltr		ecn no		dr		date		title	
A		V91874		CGC		8/27/99		R/A CARDBUS SINGLE DECK ASSEMBLY	
B		V92139		CGC		11/23/99			
C		V00452		RGD		2/7/00			
D		V12208		TFG		8/31/01		dwg no	
E		M20011		LP		1/30/02		sheet 1 of 3 size	
F		N06-0209		MZ		08/02/06		98545 A4	
				appd		Wang Jack 08/02/06		type CUSTOMER Drawing	
sheet		revision		F		F			
index		sheet		1		2		3	

FCI CONFIDENTIAL



This document is the property of and embodies CONFIDENTIAL and PROPRIETARY information of FCI. No part of the information shown on this document may be used in any way or disclosed to others without the written consent of FCI. Copyright FCI.

PRODUCT NUMBER
98545-101CAH
98545-101CAHLF



- NOTES:
- 8mm MIN CARD EJECT.
 - PUSH-ROD TRAVEL: 9.5mm
 - MATERIAL:
 - HEADER ASSY:
PLASTIC HOUSING: LCP UL94V-0 BLACK - ABOVE PCB
PIN: PHOSPHOR BRONZE
 - EJECT MECHANISM ASSY:
PLASTIC GUIDE: POLYPHTHARAMID UL94V-0 BLACK
PLASTIC PUSH-ROD BUTTON: POLYPHTHARAMID UL94V-0 BLACK
COVER PLATE, EJECT PLATE, LINK ARM,
PUSH ROD: STAINLESS STEEL
EMI CONTACT: PHOSPHOR BRONZE
 - FINISH (PIN)
UNDER PLATING: 0.5um MIN Ni
CONTACT AREA: 0.1um MIN GOLD OVER
0.5um MIN Pd-Ni
SOLDER TAIL: 2.5um MIN Sn-Pb
SOLDER TAIL (IF LF P/N): 2.5um MIN PURE Sn

Ⓢ DIM "X"

4.25±0.1	3.5±0.1	5.0±0.1
OTHERS	36,67	1,17,34,35,51,68

- SEE SHEET 3 FOR PCB LAYOUT INFORMATION.

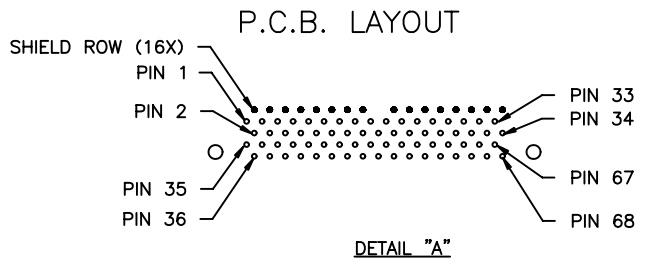
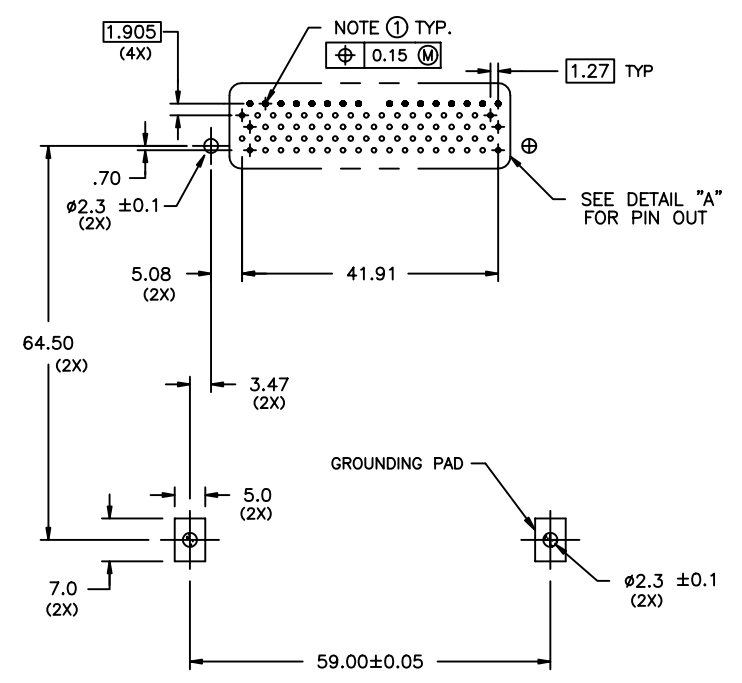
4 PER ASSEMBLY
- EJECT MECHANISM RIVET DETAIL
- DATE CODE = ABBC

EXAMPLE: 1043=3rd DAY OF 4th WEEK OF 2001
- FLATNESS 0.2mm OVER THIS EJECT MECHANISM COVER PLATE SURFACE.
- CHECK INTERNAL CLEARANCE FOR CARD AT THIS LOCATION.
- IF LEAD FREE P/N, THE HOUSING WILL WITHSTAND EXPOSURE TO 260° C PEAK TEMPERATURE FOR 10 SECONDS IN A WAVE SOLDER APPLICATION WITH A 1.00MM MINIMUM THICK CIRCUIT BOARD.
- LEAD FREE PRODUCT MEETS EUROPEAN UNION DIRECTIVES AND OTHER COUNTRY REGULATIONS AS DISCRIBED IN GS-22-008

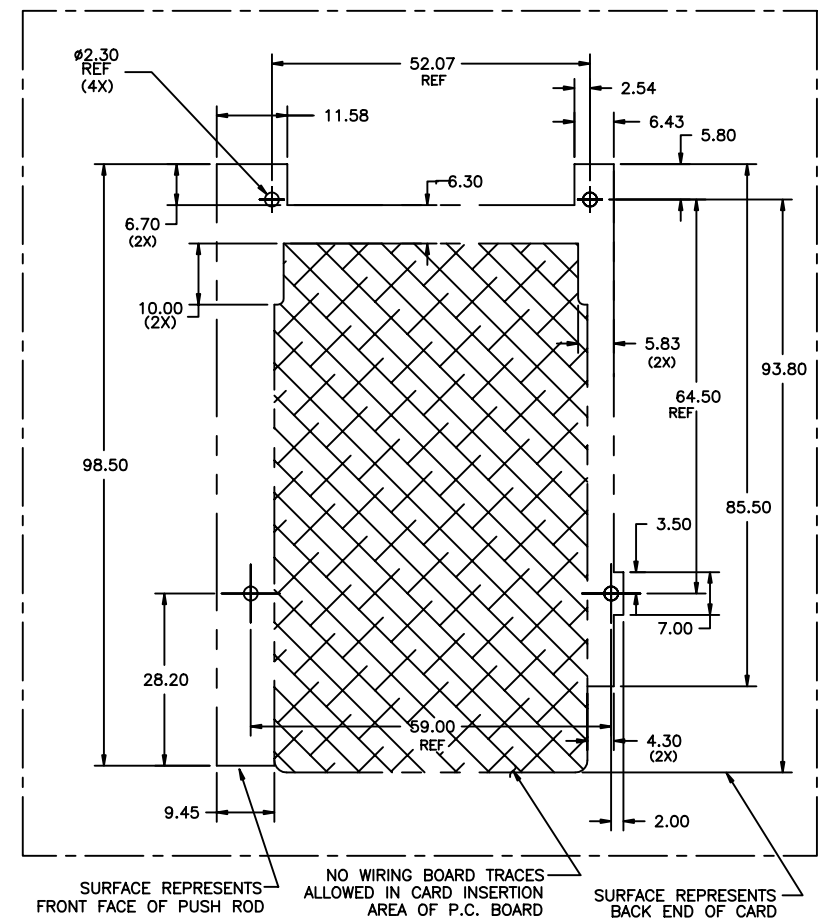
mat'l. code		surface	tolerance	projection	product family	CARDBUS
ltr ecn no dr date		ISO 1302	ISO 406 ISO 1101		title	
F		tolerances unless otherwise specified			R/A CARDBUS SINGLE DECK ASSEMBLY	
		angles	.X±.3	MM	dwg no	
		linear	.XX±.13	←	98545	
		±2'	.XXX±.051	scale 1:1	sheet 2of 3 size	
		dr	Mike Zhou 08/02/06		A4	
		enr	Mike Zhou 08/02/06		type CUSTOMER Drawing	
		chr	Qin David 08/02/06		98545	
		appd	Wang Jack 08/02/06		A4	
sheet index	revision sheet					



This document is the property of and embodies CONFIDENTIAL and PROPRIETARY information of FCI. No part of the information shown on this document may be used in any way or disclosed to others without the written consent of FCI. Copyright FCI.



- NOTES:
- ① RECOMMENDED DIAMETER IS $\phi 1.0$. FOR PROCESSES USING PASTE REFLOW, HOLE MAY BE AS SMALL AS $\phi 0.79$.
 - 2 ALL TOLERANCES ± 0.15 UNLESS NOTED.



mat'l. code		surface	tolerance	projection	product family	CARDBUS
ltr		ecn no	dr	date	title	
F		tolerances unless otherwise specified			R/A CARDBUS SINGLE DECK ASSEMBLY	
		angles	linear	MM	dwg no	
		$\pm 2'$.X \pm .3 .XX \pm .13 .XXX \pm .051	scale 1:1	sheet 3 of 3 size	
		dr	Mike Zhou	08/02/06	98545 A4	
		enr	Mike Zhou	08/02/06	type CUSTOMER Drawing	
		chr	Qin David	08/02/06		
		appd	Wang Jack	08/02/06		
sheet index	revision sheet					